

**Tessitura LL**  
Woven vinyl flooring

**asset**  
space becomes place

*tessitura collection*

vertisolfloor

vertisol







## << COMPOSER

**tessitura collection** abre las puertas a la inspiración. Permite crear infinidad de diseños y composiciones. Haciendo de ello un diseño único y propio.

**tessitura collection** opens the door to inspiration. It allows to create an infinite number of designs and compositions. Making it an unique and in-house design.

# 23<sub>dB</sub>

Suelo de absorción acústica  
Sound-absorbing flooring

La absorción acústica que presentan los suelos de **vertisol** también brinda una pisada cómoda y suave. La composición de **vertisolfloor** ayuda a amortiguar la pisada y crear un ambiente cómodo mejorando el confort vital en tus espacios.

**vertisolfloor** acoustic absorption also provides a soft and comfortable footfall.

The composition of **vertisolfloor** helps to cushion the footfall and create a comfortable environment improving the living comfort in your spaces.

\*Para la versión acústica contacte con nosotros.

\*For the acoustic version please contact us.



### Resistencia Resistance

Combina diseños ajustados a la última tendencia con una excelente resistencia al alto tráfico, a los rayos UV y una gran durabilidad. Prueba de ello son los resultados satisfactorios de la Castor Chair. **tessitura collection** ofrece 10 años de garantía.

Combines trend-setting designs with excellent resistance to high traffic, UV radiation and durability. Proof of this is the successful performance of Castor Chair. **tessitura collection** offers a 10-year warranty.



### Libre de ftalatos Phthalate-free

Nuestros suelos han sido testados para, además de ser un producto respetuoso con el medioambiente, también lo sea para las personas. **vertisolfloor** garantiza la ausencia de crecimientos de hongos y bacterias siendo el pavimento ideal para preservar la salud de los espacios.

Our floors have been tested not to be only an environmentally and friendly product, but also for people. **vertisolfloor** guarantees the absence of fungal and bacterial growth, making it the ideal flooring to preserve the health of spaces.



### Mantenimiento Maintenance

Es un producto de fácil limpieza y mantenimiento. El diseño de **tessitura collection** evita que las partículas de suciedad penetren en los poros del tejido.

It's an easy cleaning product. The **tessitura collection** design prevents dirt particles from penetrating into the pores of the fabric.



### Sostenibilidad Sustainability

Nos preocupamos de que nuestros procesos de fabricación y las materias primas que empleamos no afecten negativamente a la salud de las personas y preserven el medioambiente, como por ejemplo, evitando el uso de agua.

We ensure that our manufacturing processes and the raw materials we use do not adversely affect people's health and preserve the environment, for example, by avoiding the use of water.

**vertisolfloor** está certificado con la norma **FloorScore®** y tiene disponible su **Environmental Product Declaration (EPD)**, cumpliendo con los estándares medioambientales y de sostenibilidad más reconocidos para materiales de suelo.

**vertisolfloor** is **FloorScore®** certified and has its **Environmental Product Declaration (EPD)** available, meeting the most recognized environmental and sustainability standards for flooring materials.



**MADE AND DESIGNED IN EUROPE**

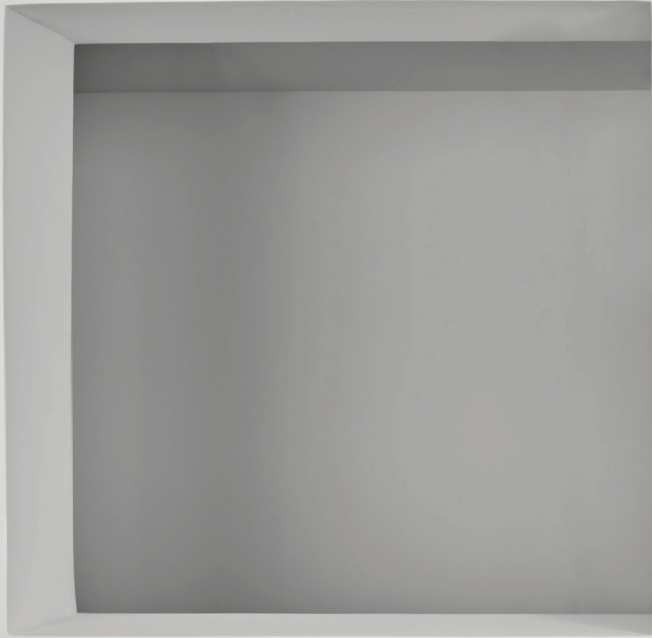




vertisofloor  
Wicker Trigo

# Roll

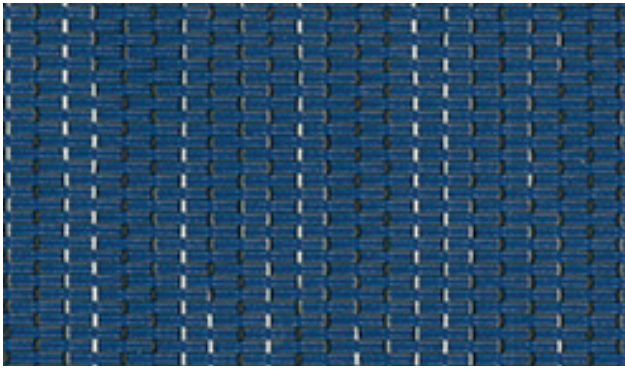




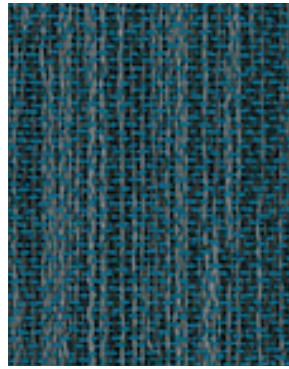
vertisofloor  
Panama Square Topo

# Square

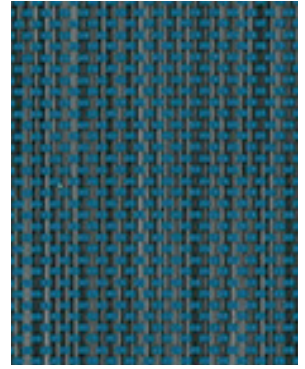




■ Chroma  
■ Cobalt



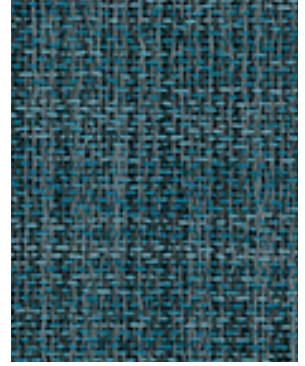
■ Memphis  
■ Indico



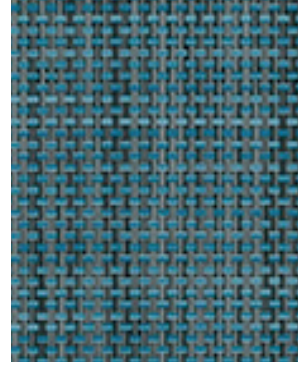
■ Panama  
■ Ocean



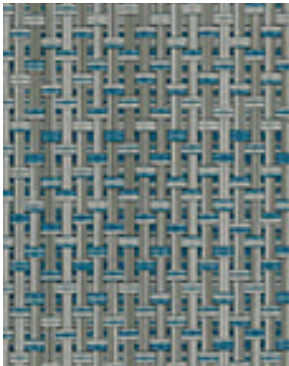
vertisolfloor  
Pobo Pangea



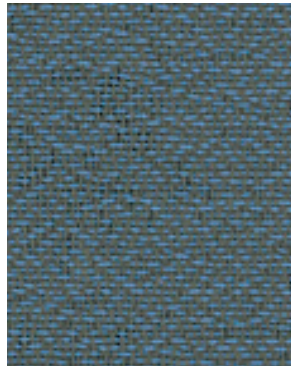
■ Memphis  
■ Pacific



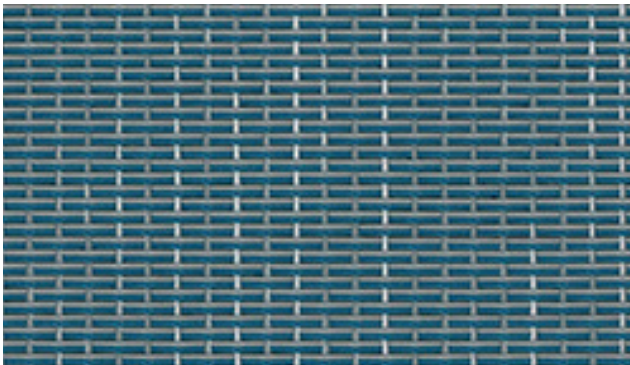
■ Panama Square  
■ Atlantic



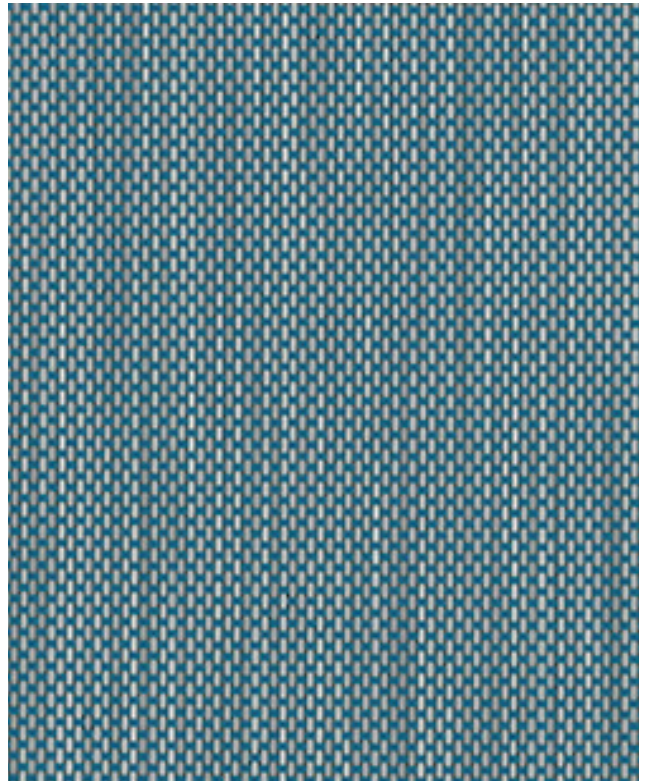
■ Pobo  
■ Pangea



■ Memphis  
■ Urban Blue

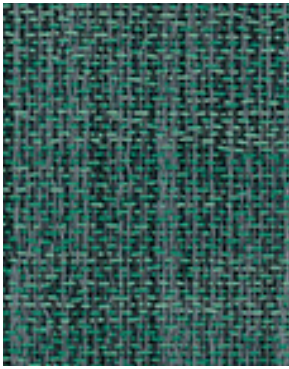


■ Chroma  
■ Horizon



■ Panama  
■ Air

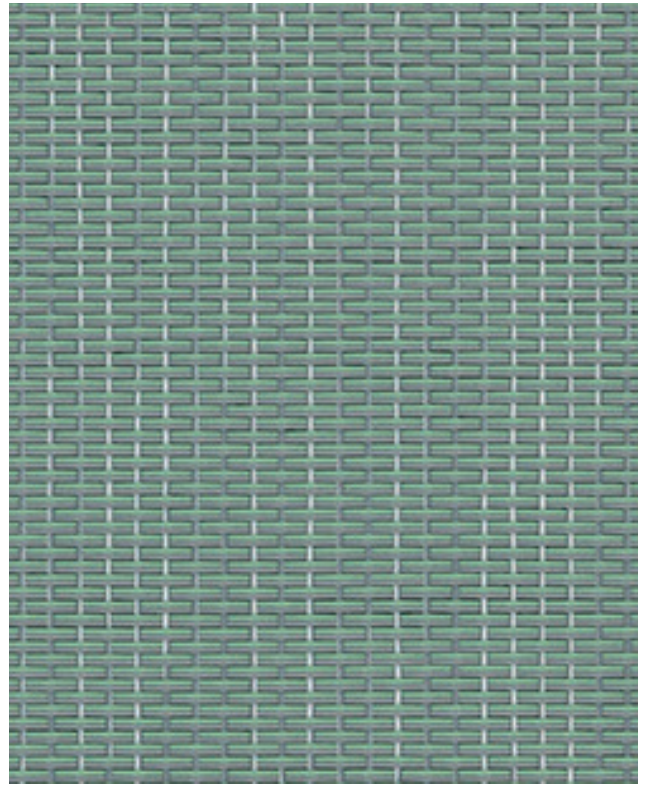




Memphis Arte  
Bush



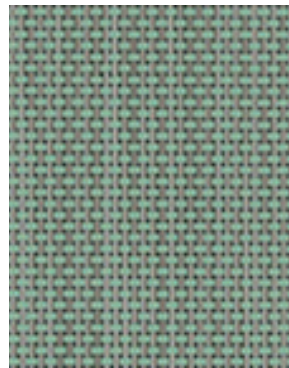
Panama  
Sequoia



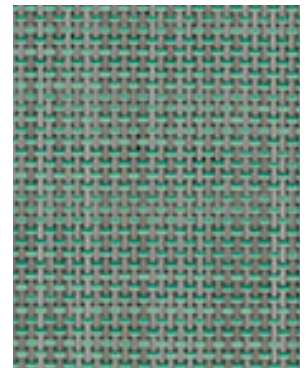
Chroma  
Aquamarine



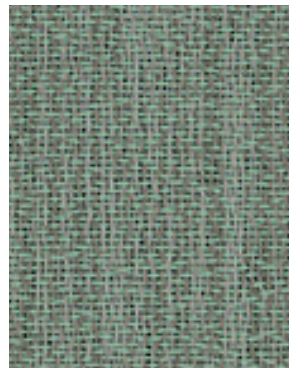
vertisofloor  
Chroma Aquamarine



Panama  
Eucalpto



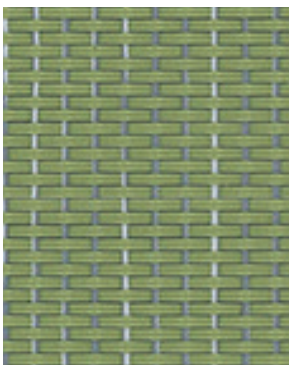
Panama Square  
Foglia



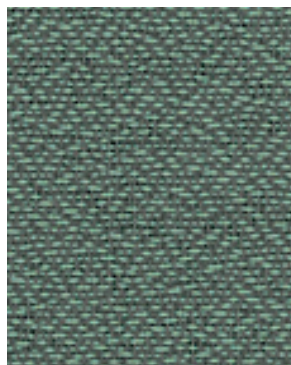
Memphis  
Root



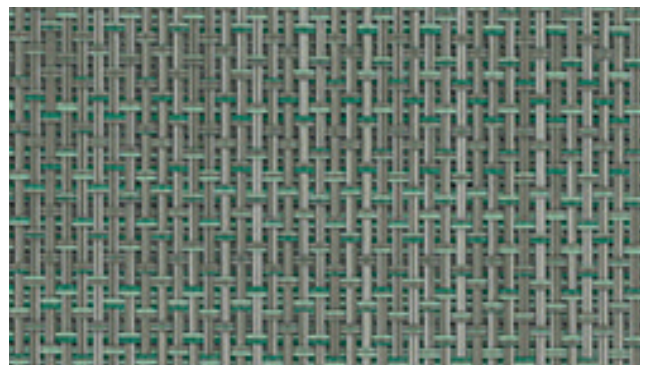
Memphis  
Moss



Chroma  
Erba

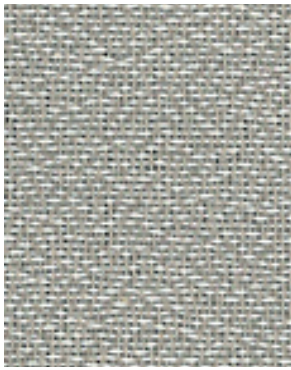


Memphis  
Matcha

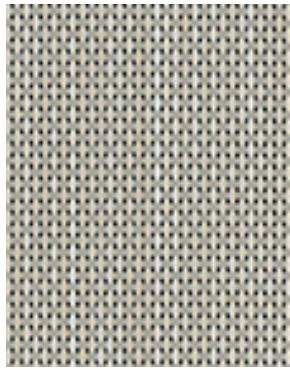


Pobo  
Forest

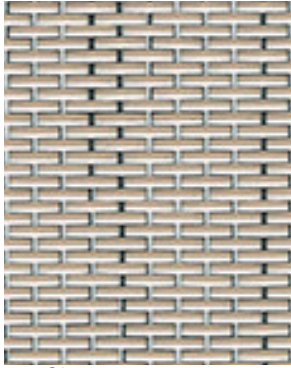




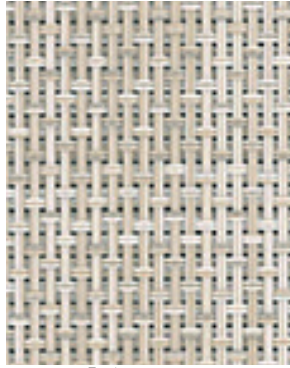
Memphis Trigo



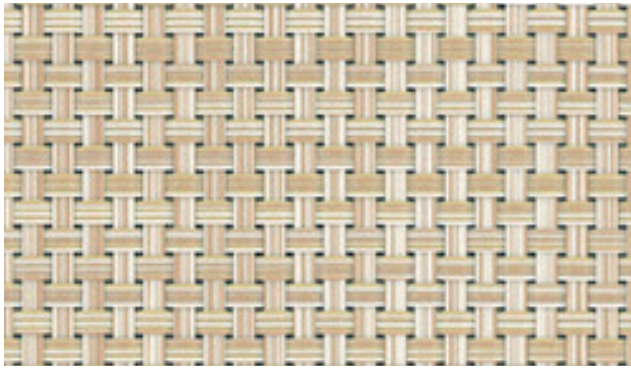
Panama Trigo



Chroma Trigo



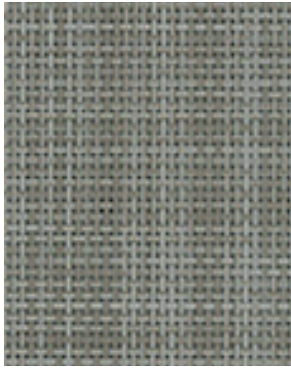
Pobo Trigo



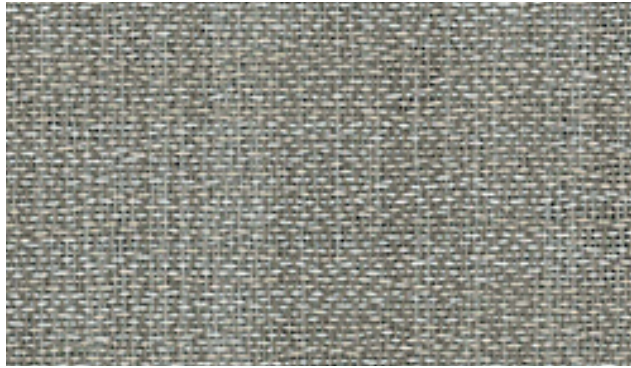
Wicker Trigo



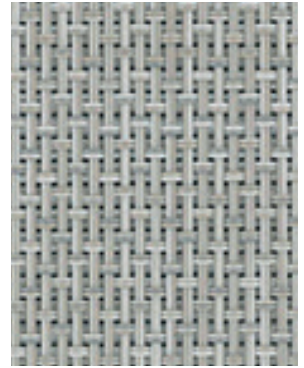
vertisolfloor Wicker Trigo



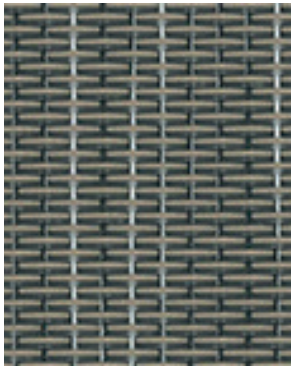
Panama Square Malta



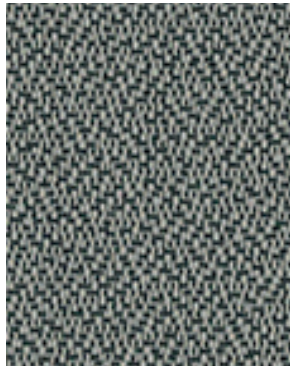
Memphis Concrete Champagne



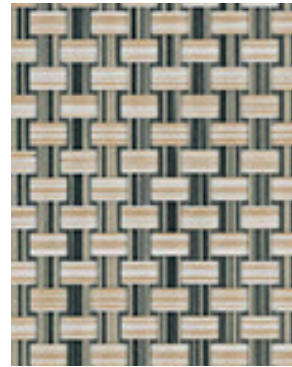
Pobo Tortora



Chroma Terroir



Memphis Terroir

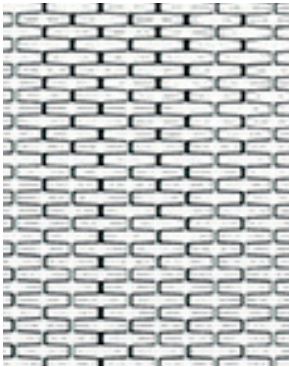


Wicker Jump

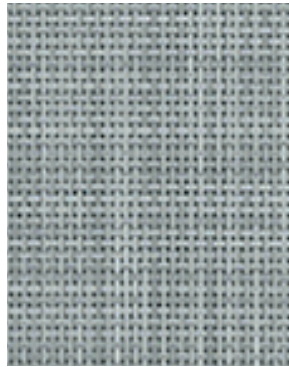


Wicker Think

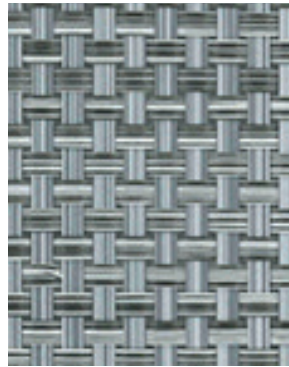




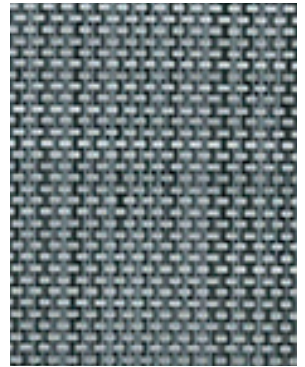
■ Chroma  
■ Pure White



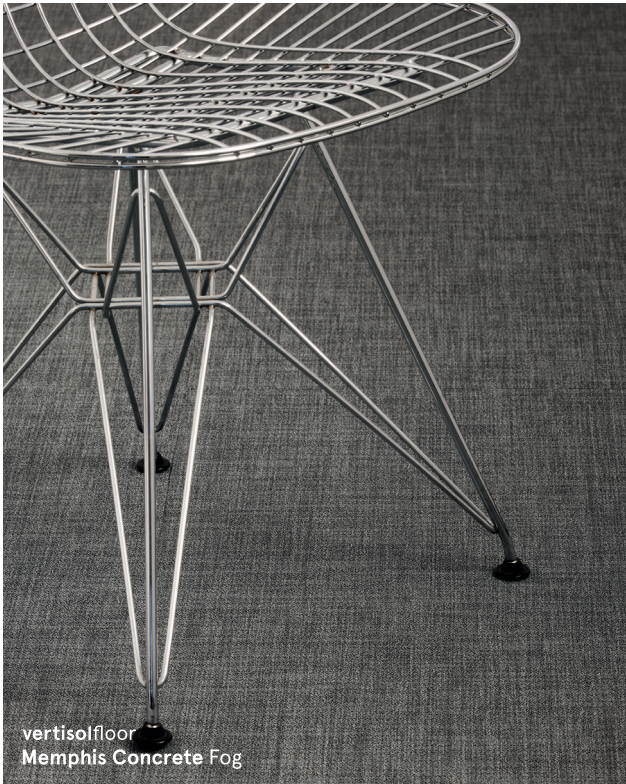
■ Panama Square  
■ Coin



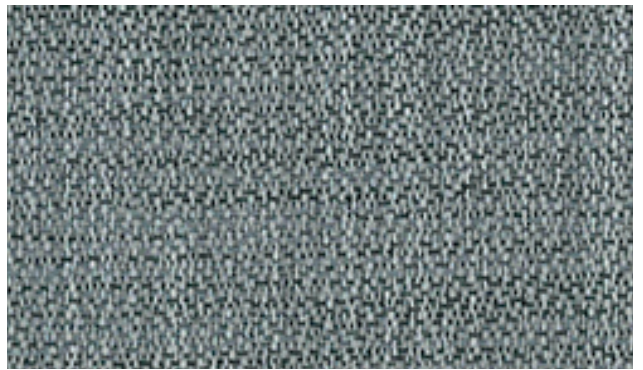
■ Wicker  
■ Float



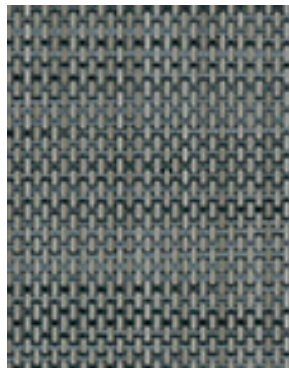
■ Panama Square  
■ Mist



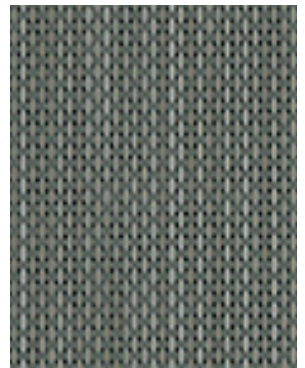
vertisolfloor  
Memphis Concrete Fog



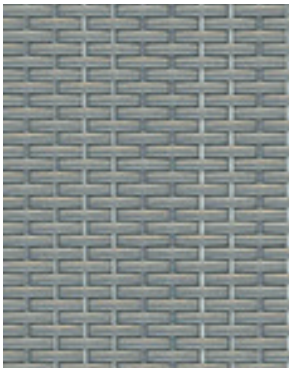
■ Memphis Concrete  
■ Fog



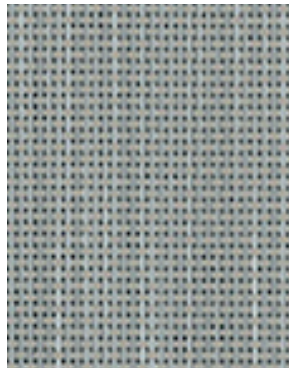
■ Panama Square  
■ Topo



■ Panama  
■ Terroir



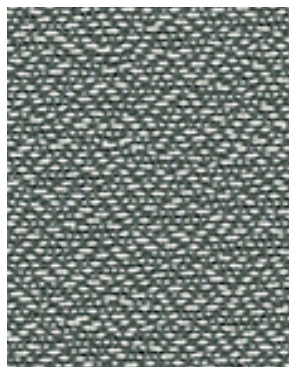
■ Chroma  
■ Tortora



■ Panama  
■ Tortora



■ Wicker  
■ Tortora

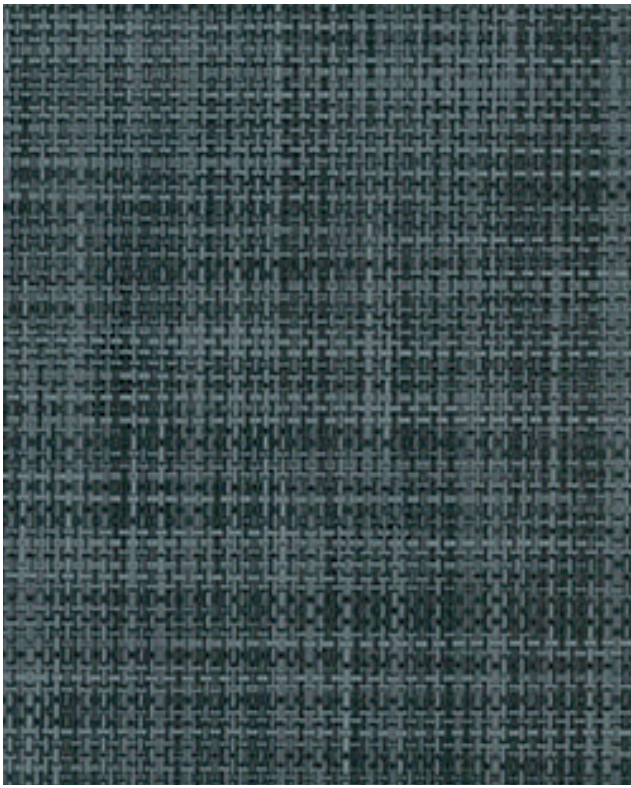


■ Memphis  
■ Tortora

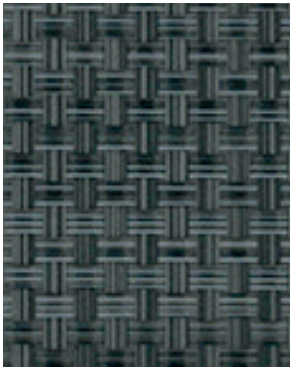


■ Memphis Concrete  
■ Fall

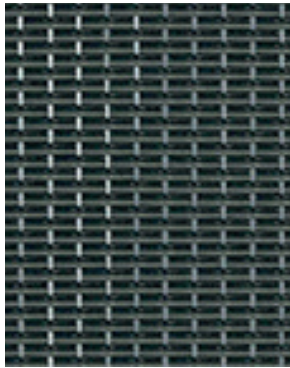




■ ■ Panama Square  
■ ■ Thunder



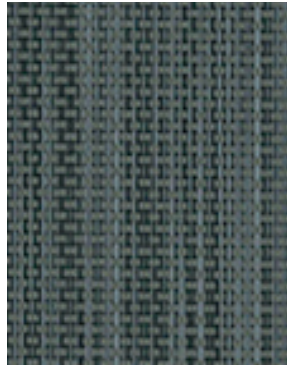
☞ ■ ■ Wicker  
■ ■ Tarmac



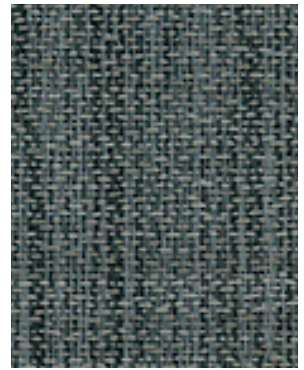
■ ■ Chroma  
■ ■ Tarmac



■ ■ Chroma  
■ ■ Faded Denim



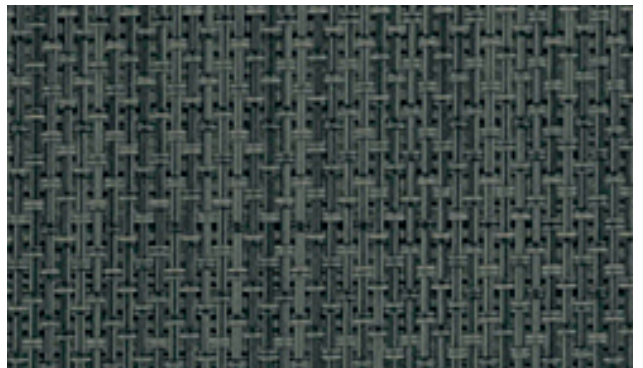
■ ■ Panama  
■ ■ Tarmac



☞ ■ ■ Memphis Concrete  
■ ■ Seed



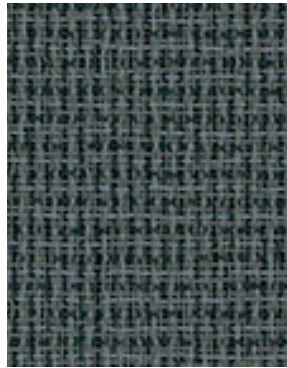
☞ ■ ■ Memphis  
■ ■ Tarmac



■ ■ Pobo  
■ ■ Tarmac



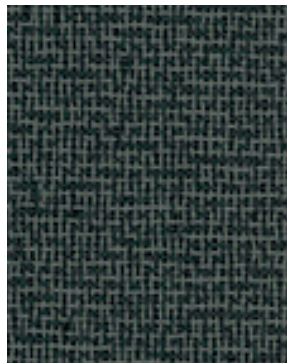
vertisolfloor  
Memphis Black Label 1



\* ■ ■ ■ ■ Memphis  
■ ■ ■ ■ Black Label 4



\* ■ ■ ■ ■ Memphis  
■ ■ ■ ■ Black Label 3



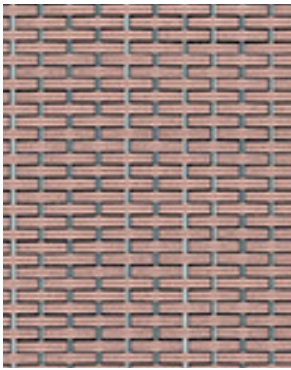
\* ■ ■ ■ ■ Memphis  
■ ■ ■ ■ Black Label 1



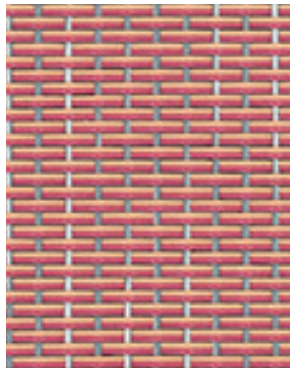
\* ■ ■ ■ ■ Memphis  
■ ■ ■ ■ Black Label 2

\*no aplicable en junta partida  
\*not applicable in staggered joints

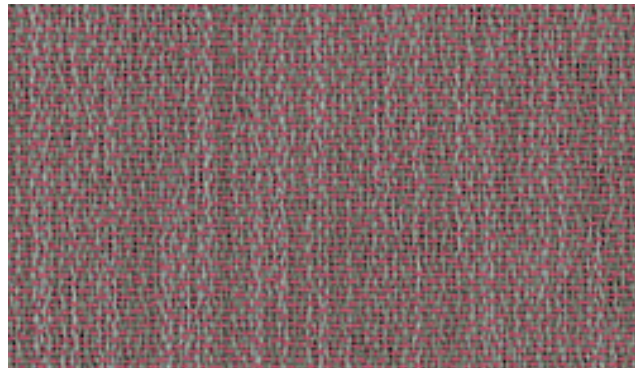




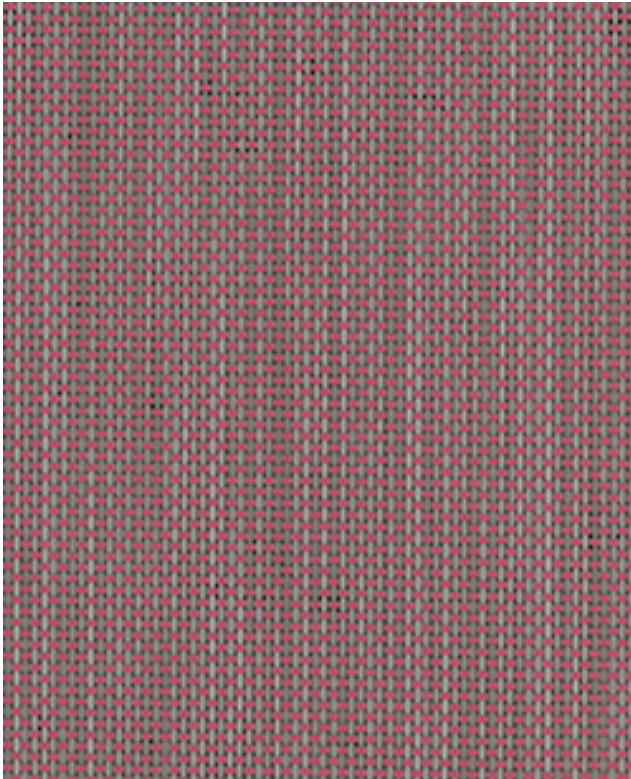
Chroma  
Orchid



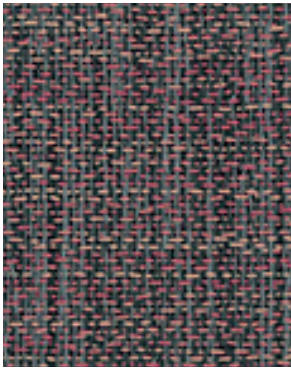
Chroma  
Flamingo



Memphis  
Blush



Panama  
Marsala



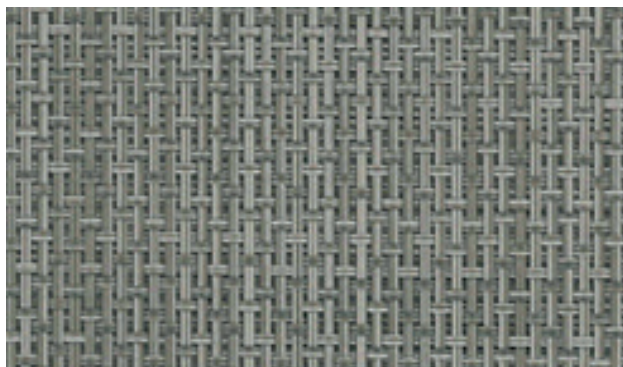
Memphis Arte  
Caoba



Panama Square  
Oxford



Chroma  
Prugna



Pobo  
Terroir



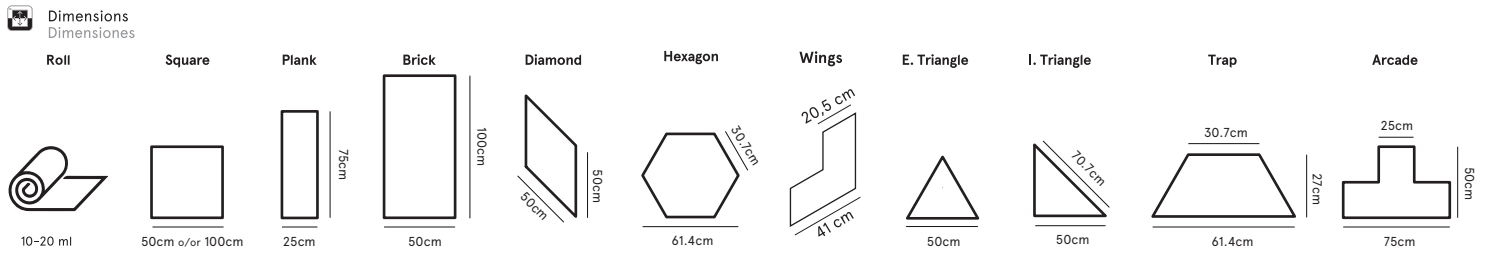
Wicker  
Terroir



vertisofloor  
Memphis Arte Caoba · Blush · Concrete Fall



Technical specifications	Standard	Panama	Chroma	Memphis	Wicker	Pobo
Composition / Composición	-	75% Vinyl + 25% polyester + backing 100% vinyl	91% Vinyl + 9% polyester + backing 100% vinyl	75% Vinyl + 25% polyester + backing 100% vinyl	87% Vinyl + 13% polyester + backing 100% vinyl	90% Vinyl + 10% polyester + backing 100% vinyl
Weight / Peso (g/m2) (oz/sq ft)	ISO 8543:1998	2900 g/m <sup>2</sup> +13% / -10% 9.5 oz/sq ft +13% / -10%	3500 g/m <sup>2</sup> +13% / -10% 11.5 oz/sq ft +13% / -10%	3100 g/m <sup>2</sup> +13% / -10% 10.2 oz/sq ft +13% / -10%	3500g/m <sup>2</sup> +13% / -10% 11.5 oz/sq ft +13% / -10%	3780g/m <sup>2</sup> +13% / -10% 12.4 oz/sq ft +13% / -10%
Thickness / Espesor (mm.) (in)	ISO 1765:1986	2.25 mm 0.09 in	2.70 mm 0.11 in	2.30 mm 0.09 in	2.60 mm 0.10 in	2.80 mm 0.11 in
Light Fastness / Solidez a la luz (Grey scale/Escala de grises: 1-5)	EN ISO 4892:2006 (exterior)	> 4	> 4	> 4	> 4	> 4
Light Fastness / Solidez a la luz (Blue scale/Escala de azules: 1-8)	EN ISO 105B02:2001 (interior)	> 7	> 7	> 7	> 7	> 7
Dimensional Stability % Estabilidad dimensional %	EN ISO 23999:2012	≤0.25%	≤0.25%	≤0.25%	≤0.25%	≤0.25%
Residual Indentation Huella residual	EN ISO 24343-1:2012	<0.10 mm <0.003 in	<0.30 mm <0.011 in	<0.10 mm <0.003 in	<0.10 mm <0.003 in	<0.30 mm <0.011 in
Castor Chair Test Ensayo silla con ruedas	EN 985:2002	Intensive use	Intensive use	Intensive use	Intensive use	Intensive use
Sound Insulation Aislamiento acústico	EN ISO 10140-3:2011	13 dB	14 dB	12 dB	14 dB	13 dB
Thermal Resistance Resistencia térmica	EN 12667:2001	< 0.15 m <sup>2</sup> K/W	< 0.15 m <sup>2</sup> K/W	< 0.15 m <sup>2</sup> K/W	< 0.15 m <sup>2</sup> K/W	< 0.15 m <sup>2</sup> K/W
Static Electricity Electricidad Estática	EN 1815:1997	< 2 kV	< 2 kV	< 2 kV	< 2 kV	< 2 kV
Slip Resistance Resistencia al deslizamiento	DIN 51130:2014	R10	R9	R10	R9	R10
Slip Resistance Resistencia al deslizamiento	EN 13893:2003	>0.4	>0.4	>0.4	>0.4	>0.4
Slip Resistance Resistencia al deslizamiento	ASTM C1028-96 Static Coefficient	Wet: 0.65 Dry: 0.75	Wet: 0.59 Dry: 0.72	Wet: 0.79 Dry: 0.86	Wet: 0.62 Dry: 0.70	Wet: 0.73 Dry: 0.78
Fire Classification Clasificación de fuego	EN 13501-1:2007 ASTM E648 (NFPA 253)	Bfl-S1 Class 1	Bfl-S1 Class 1	Bfl-S1 Class 1	Bfl-S1 Class 1	Bfl-S1 Class 1
Antibacterial activity Comportamiento antibacteriano	ASTM E 2180-18 ASTM G21:2013	Inhibition of bacterial growth Antifungal activity	Inhibition of bacterial growth Antifungal activity	Inhibition of bacterial growth Antifungal activity	Inhibition of bacterial growth Antifungal activity	Inhibition of bacterial growth Antifungal activity
CE classification / Clasificación CE	EN 14041:2004	2895-CPR-SH00981	2895-CPR-SH00981	2895-CPR-SH00981	2895-CPR-SH00981	2895-CPR-SH00981
Use classification / Clasificación de uso	EN 1307:2014	Heavy Commercial Use	Heavy Commercial Use	Heavy Commercial Use	Heavy Commercial Use	Heavy Commercial Use



**Certificates**  
Certificados



EPD número de registro  
S-P-01029  
www.environdec.com

All specifications are based on average values and may deviate. The values are for guidance and are not contractual. Subject to technical modifications.  
The straight weft is not an inherent condition. Weaving technology features colour effects because of light, making it an exclusive and unique product. Also bicolour yarns create a randomly harmonious effect. These effects are no ground for claims.

Todas las especificaciones están basadas en promedios y pueden variar. Los valores son una guía y no son contractuales. Están sujetos a modificaciones técnicas.  
La trama recta no es una condición inherente. La forma en que está tejido provoca efectos de color a casusa de la luz, convirtiéndolo en un producto único y exclusivo. Los tejidos bicolor crean un efecto armónico aleatorio. Estos efectos no son motivo de reclamación.

vertisol fabrics can be found in databases such as:



MADE AND DESIGNED IN EUROPE

**vertisol**  
Vertisol Internacional, SRL  
Galileu Galilei, 68 · 08403  
Granollers (Barcelona)  
T. (+34) 93 840 14 44  
mkt@vertisol.es  
vertisol.com





