

Move & Lead
Executive Desk

asset
space becomes place

MOVE&LEAD

User manual



Safety and warnings

! Read and understand the User Manual before using the product.

- ---

Inappropriate use of this product may cause property damage or bodily injury.
- ---

Check surroundings on all sides before using the desk. Do not place any objects taller than 630 mm under the desk.
- ---

Desks should not be used in environments with high humidity or dampness.
- ---

If you need to move the desk, DO NOT lift it only by holding the desktop. Lifting this way can stress the fasteners connecting the frame to the desktop.
- ---

Please provide this operation manual to any users, installers, or support personnel operating the product.

Usage

- ---

The sit-stand has 2 electric lifting columns.
- ---

The desk height is adjustable so the desktop can be fixed for most suitable user's position. These desks are designed only for ergonomic sit-stand position.
- ---

Do not move around, crawl or lie under the desk. Do not sit or stand on the desk desktop. Any other use is at user's risk.

Setup and installation

! For the first start of desk please press and hold "down" button for control box activation.

- ---

Choose a placement for the desk that is a safe distance from window frames, radiators, furniture etc.
- ---

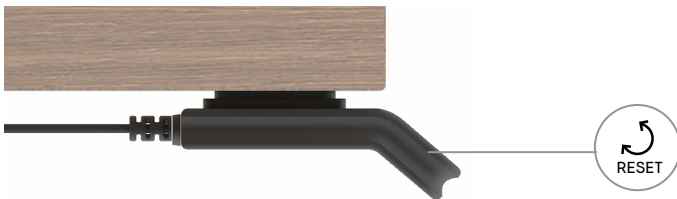
Once the desk has been assembled, adjust the feet so that the desk is level and does not shift its position. After this, connect the desk to the outlet and the desk is ready for use.

Troubleshooting

If your desk does not function properly (does not go up or down; does not move at all) please do the RESET:

1 Press and hold "Down" button for 5 seconds.
This will reset a control box of columns.

2 Now the desk is ready for use.
If this does not work, please contact your seller.



Important

80kg

Maximum desk lifting capacity (desk-top included): 80 kg

Do not exceed this given load.

1min.

Please keep in mind that the time for a continuous desk movement upwards or downwards is 1 minute.

9min.

After 1 minute of an unstopped operation, a resting period of 9 minutes is required.

38mm/s.

Travel Speed Up to 38 mm/s

Hardware connection

Lid

The lid under the desktop is designed for easy access to the power socket block, which is fixed to the frame. There is also a shelf on the right side for holding a laptop charging block. The lid is secured with clips. Do not place any items directly on top of the lid when closing it, as this may cause damage or prevent proper closure.



Grommet

After hardware (monitor, laptop, charger, etc.) is connected to power sockets, cables could be routed through the grommet cover to the desktop surface.



Qi wireless charging

Qi wireless charger is integrated into the desktop (depending on the chosen desk type). The charger itself is hidden under the desktop, and the charging area is marked on the surface. To charge your device, place a compatible phone on the marked area – you will hear a beep and charging will begin. Make sure that the center of your device's charging area is aligned with the center of the marking – otherwise, the device may not charge.



