

Silenshh
Single Booths

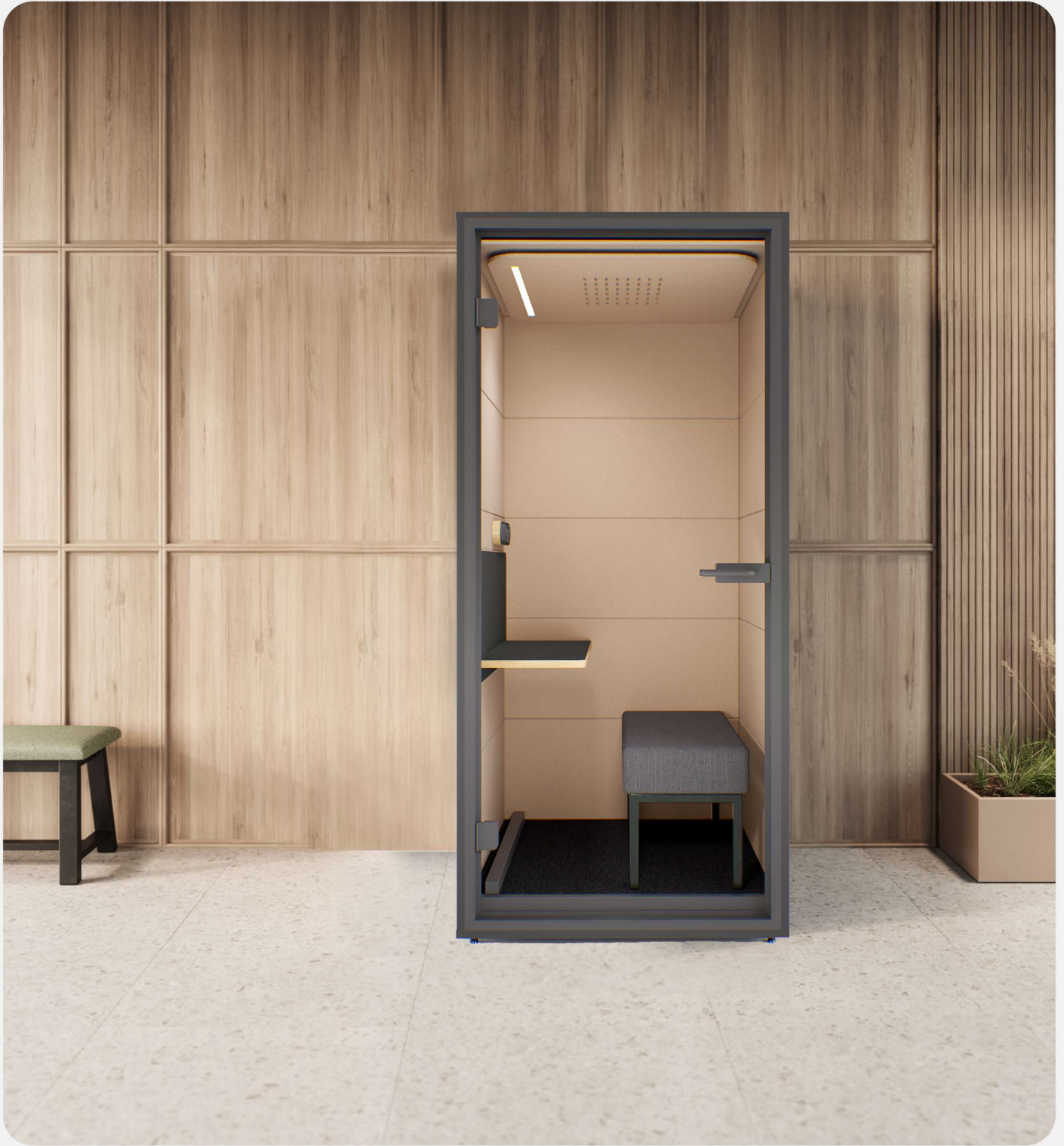
asset
space becomes place

asset

Soundproof phone booth for one person

Silenshh

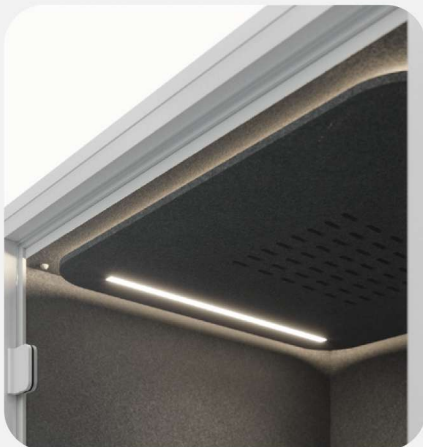




One model. Many Design Options.

Silenshh is a modern, single acoustic booth designed to deliver maximum privacy and focus in minimal space. With its clean lines and timeless aesthetic, it integrates effortlessly into any office environment.

What truly sets Silenshh apart is its high level of customization. Ideal for longer sessions or enhanced comfort, the booth offers a variety of design options that elevate both functionality and user experience.



Indirect Lighting



LED



Ventilation



Socket



Table



Door Handle

External dimensions	102 x 102 x 226 cm (w, d, h)
Internal dimensions	94 x 96 x 200 cm (w, d, h)
Table	Surface: 34 x 80 cm (d, w) Table height: 103 cm OR 73 cm
Weight	Gross weight (with packaging on pallet): 330 kg Net weight: 280 kg
Minimum room height for assembly	250 cm with regular tools 235 cm with special tools
Minimum space for assembly	min. 40 cm space required on each side for assembly. A minimum of 110 cm is required at the front
Ventilation	Ventilation rate: 4.6 m ³ / minute Two fans installed in the floor module. Two fans installed in the ceiling module.
Post-ventilation	Ventilation runs for 8 minutes after leaving the booth, renewing all the air inside the booth. Lighting remains on during this time.
Lighting	Direct lighting: LED strip: 80 cm Color temperature: 4000K Indirect lighting: LED strip: 210 cm Color temperature: 4000K
Electrification	Execution adapted to the usual country configuration. DE, AT, NL: 1x Type F socket, 1x USB A, 1x USB-C CH: 1x Type J socket, 1x USB A, 1x USB-C FR, BE, LUX: 1x Type E socket, 1x USB A, 1x USB-C DK: 1x Type K socket
Power consumption	Standby: 2W Active: 55W
Configurations	Special configurations available on request
Warranty	2 years

Exterior color



White
RAL 9016



Anthracite
RAL 7021

Frame and door accessories
(including door handle and door hinges)



White
RAL 9016



Black
RAL 9005

Interior made of recycled PET felt



Coffee



Light Grey



Grey (Standard)

Carpet



Black

Table



Birch plywood



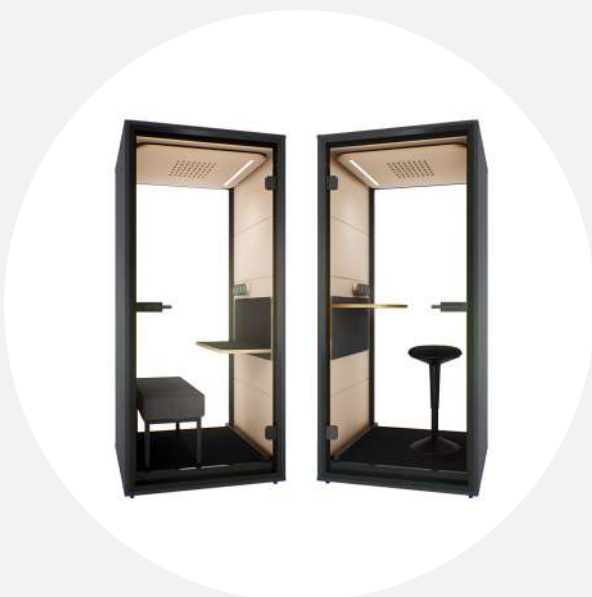
HPL White RAL 9016

One model. Many Design Options.

Configuration



Solid Backwall



Glass Backside

Options



Moving-Kit



Ethernet



Monitor mount



Balance stool

